

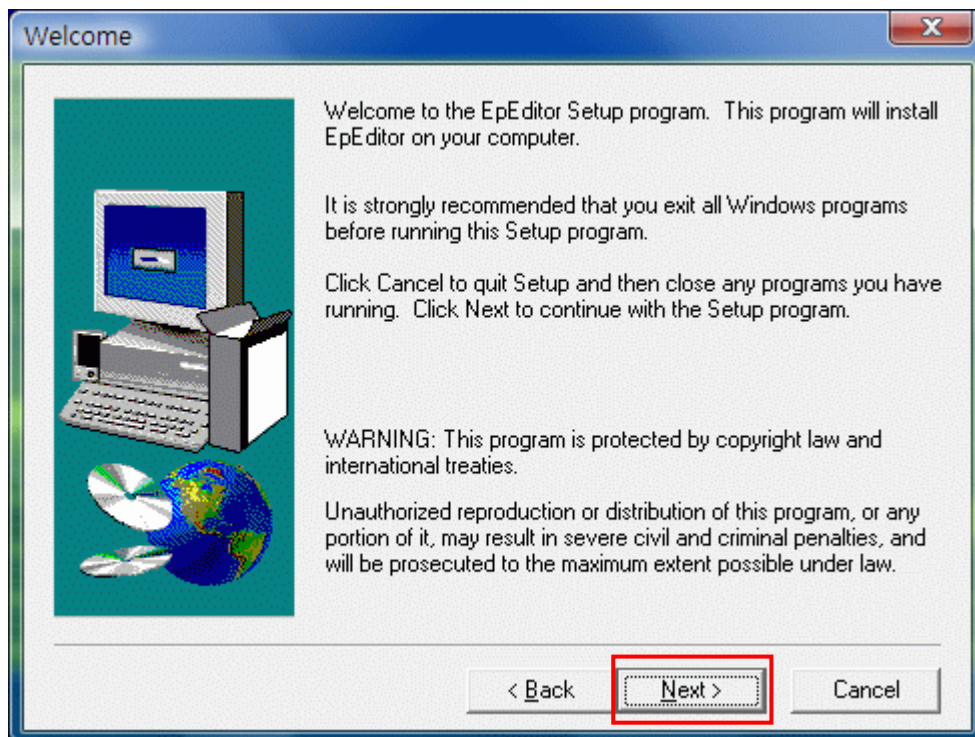
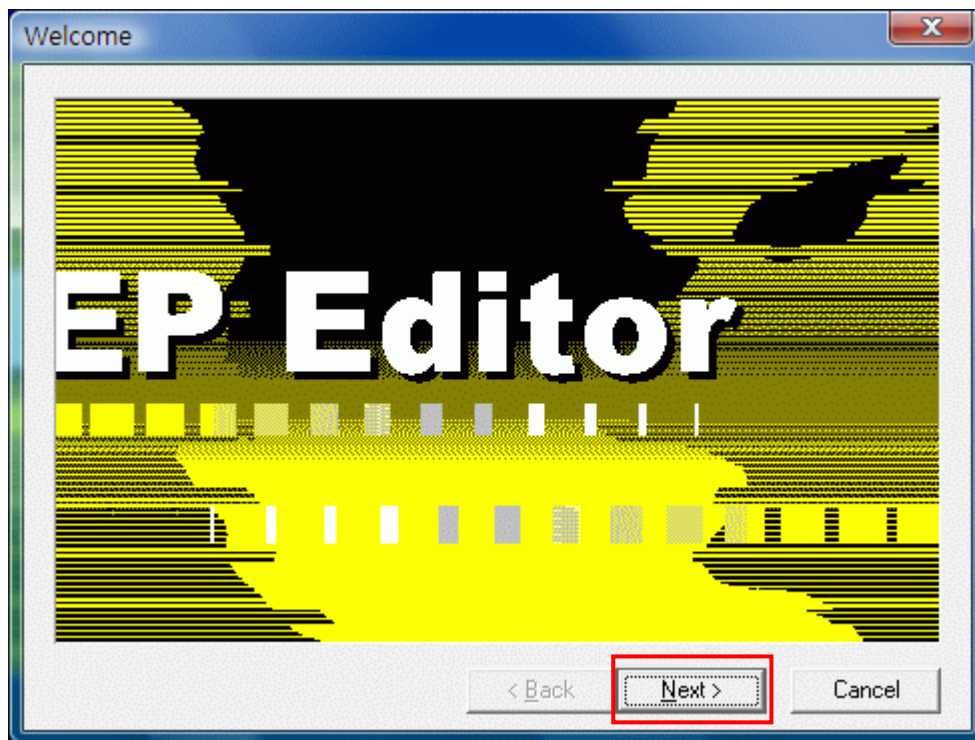
LIYAN PROGRAMMABLE LOGIC CONTROLLER

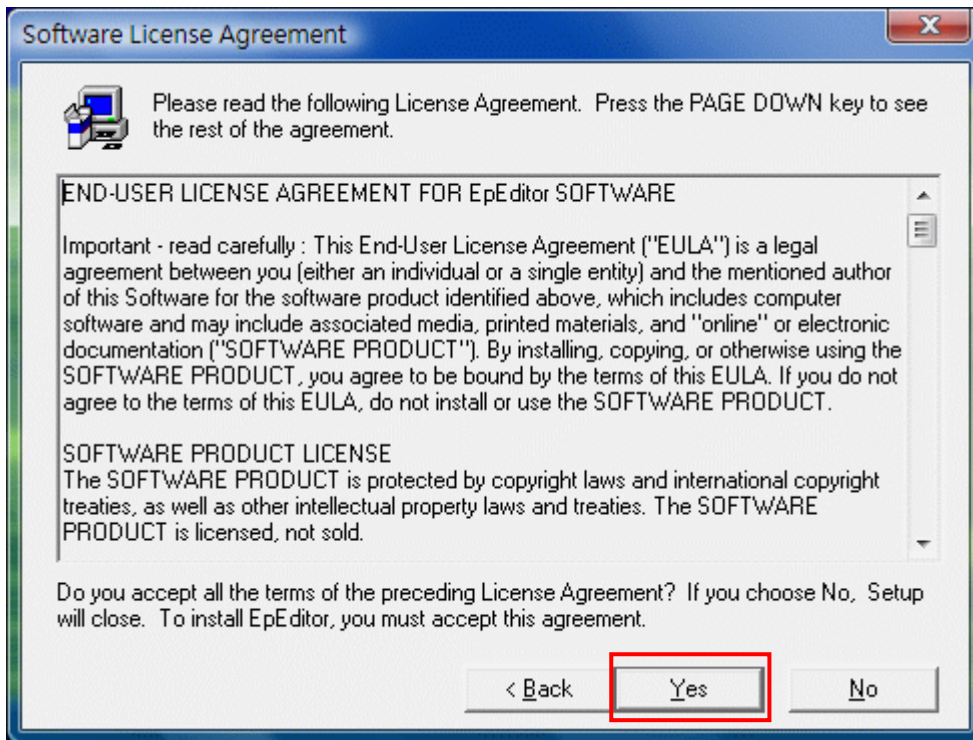
LYPLC
EPeditor

USER'S MANUAL

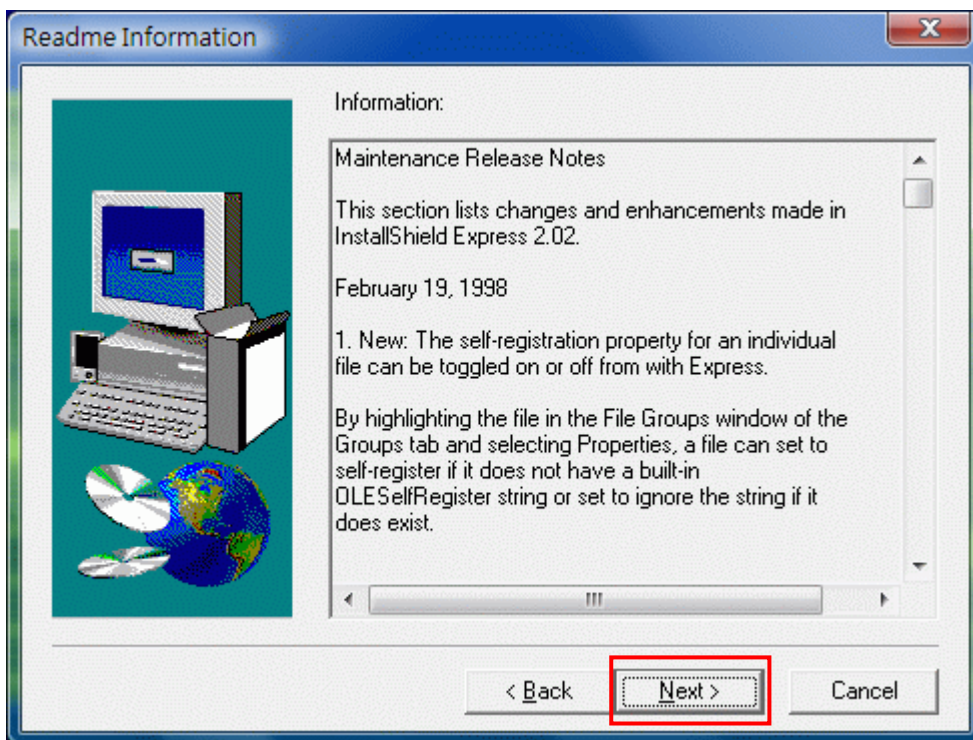
(1) Setup software

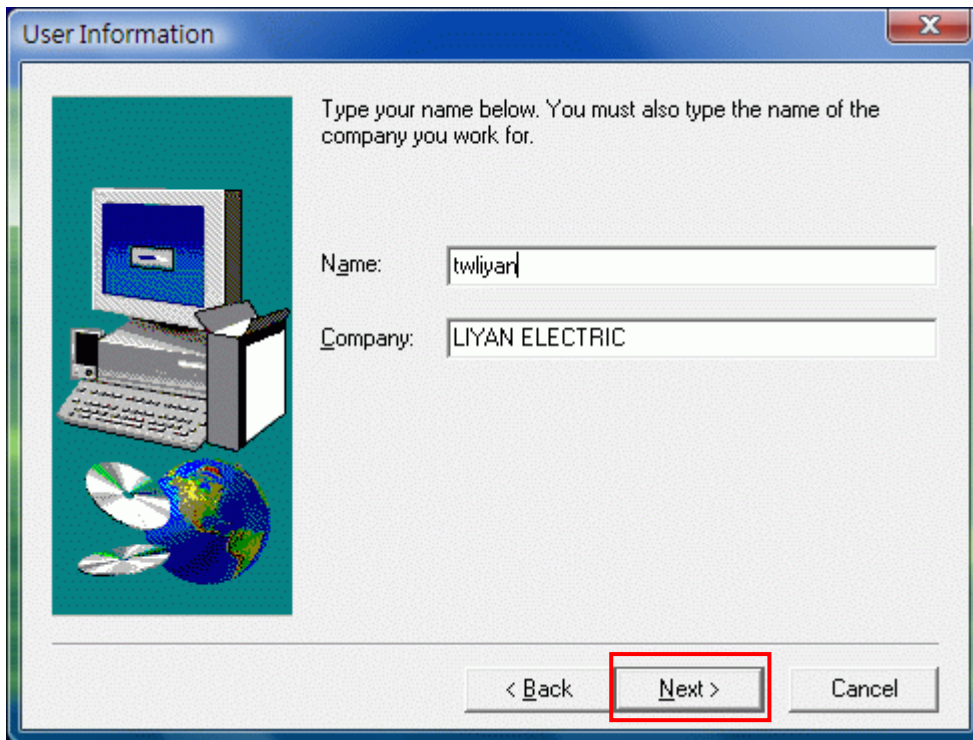
Execute EpEditor\setup.exe



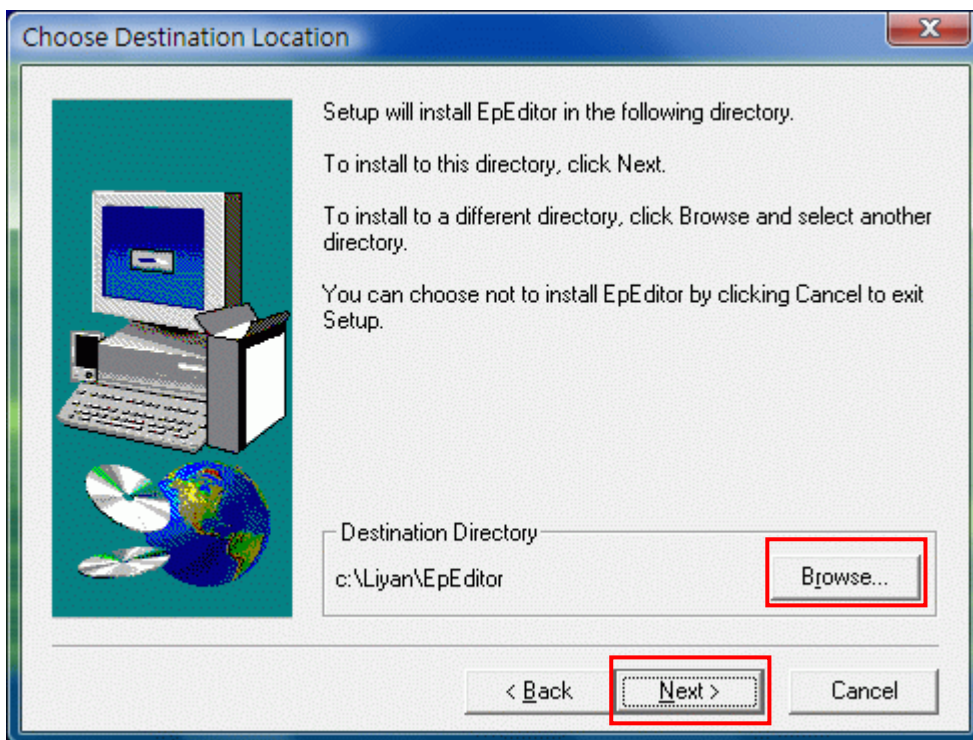


Yes: Agree this software license agreement

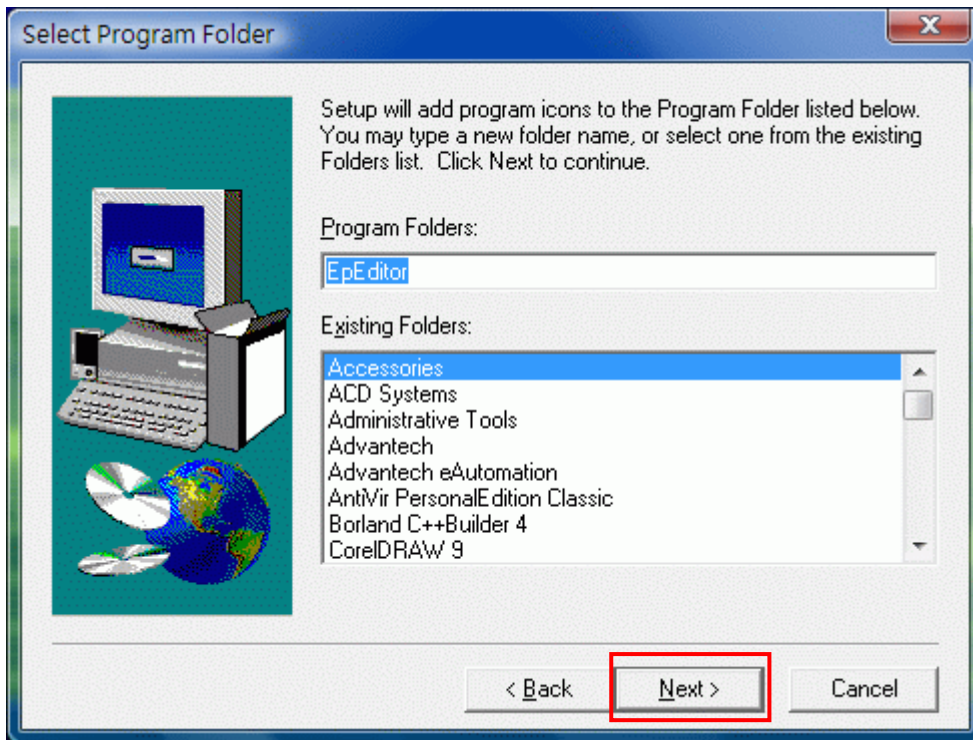




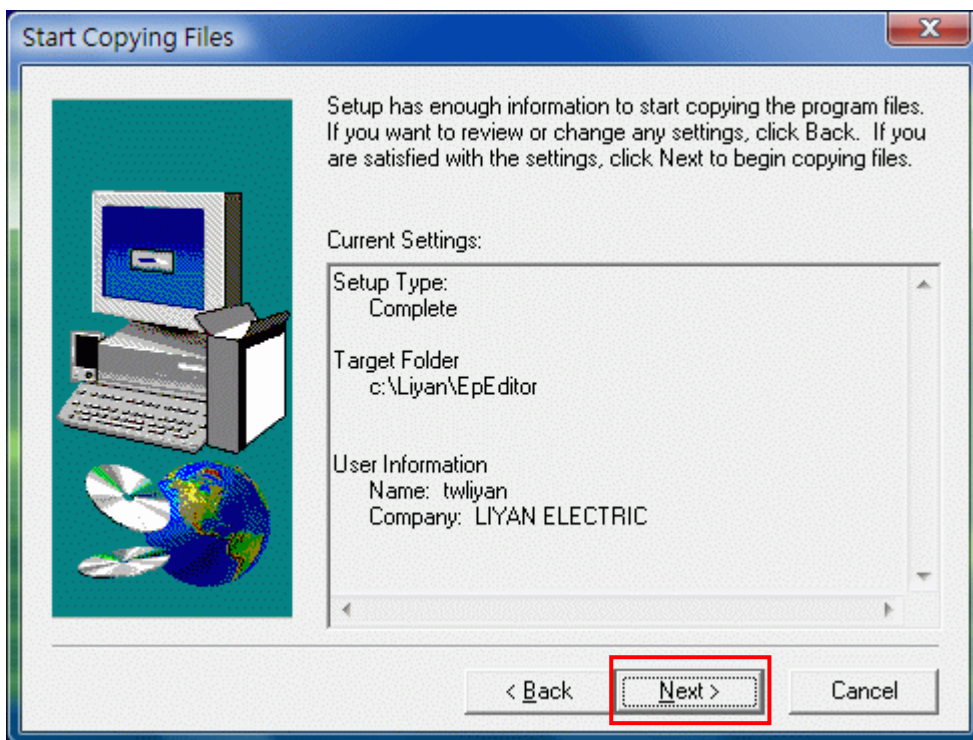
Input user's name and company



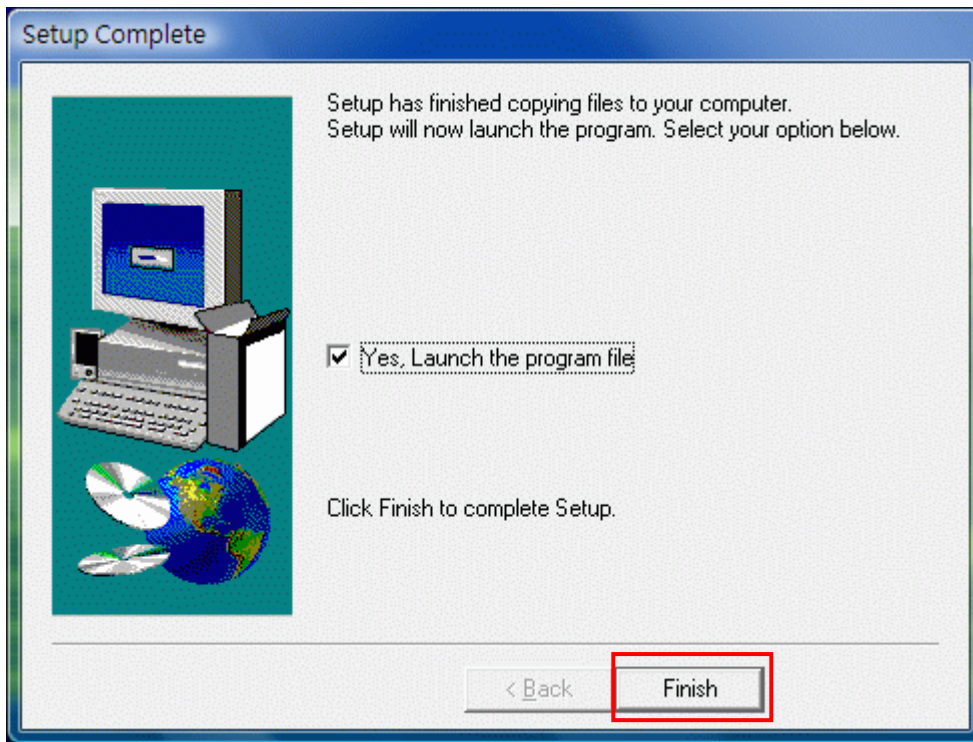
Browse: change destination directory. If not change, system will set it as C:\Liyon\EpEditor



Choose program folder or add a new one. If not change, system will build a new folder as EpEditor.

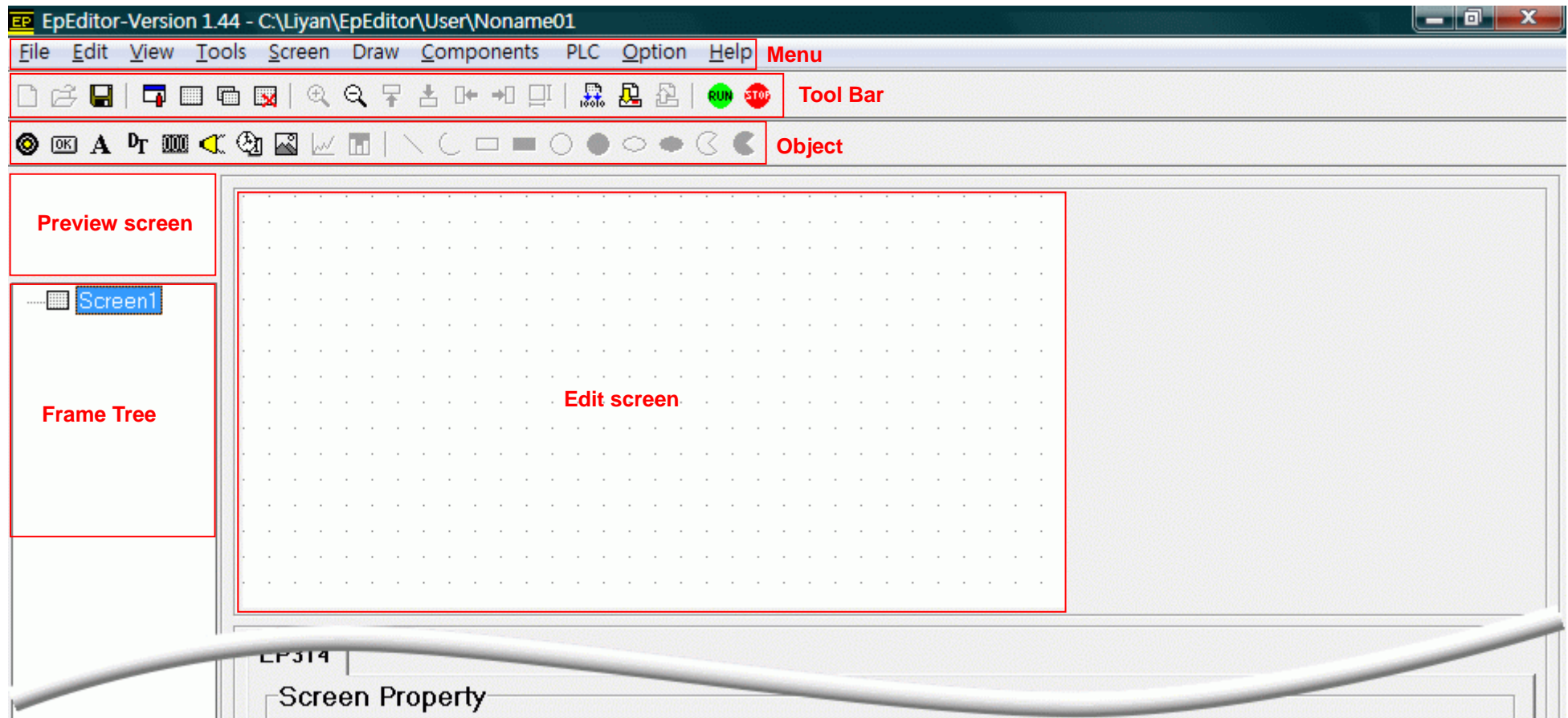


Confirm setup information. If need to change, press Back.



Setup Complete

(2) Overview



EP314

Screen Property

Screen No Starting Screen No

Description

Press Jump To Screen

Press Jump To Screen

Property setting

X=32 ,Y=4 Screen: 400%

EP314 Ex1n

Status bar


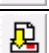
Mouse Position

Object Position

HMI Type


PLC type

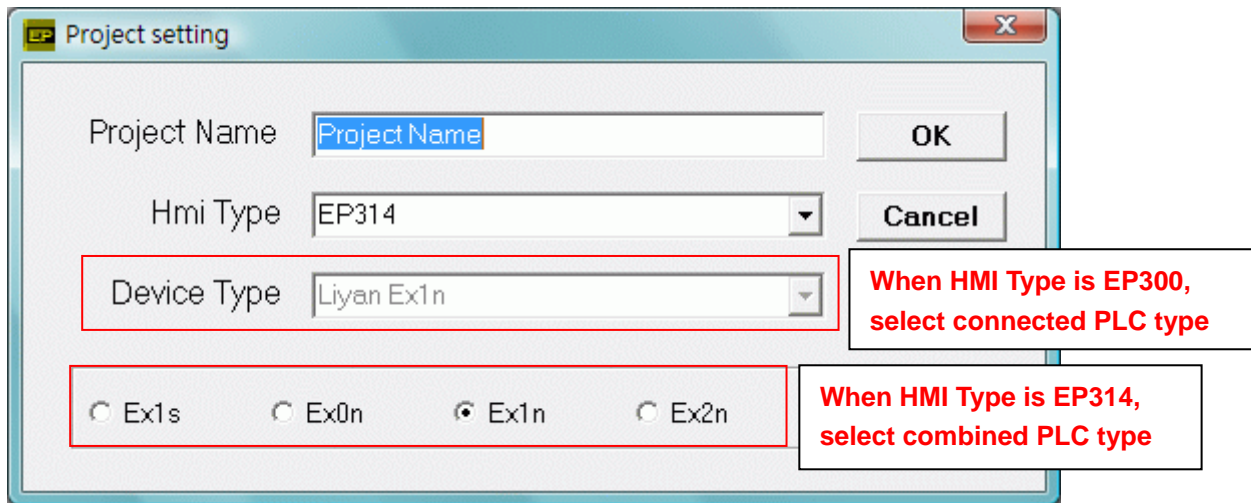
(3) Function

Button	Function
	New file
	Open file
	Save file
	System setting
	Create new screen
	Copy screen
	Delete screen
	Zoom in
	Zoom out
	Move up object
	Move down object
	Move left object
	Move right object
	Compile program
	Download program to HMI
	Indicator
	Button
	Static text
	Dynamic text
	Numeric Entry
	Buzzer
	BitMap
	PLC RUN
	PLC STOP

(4) Programming steps

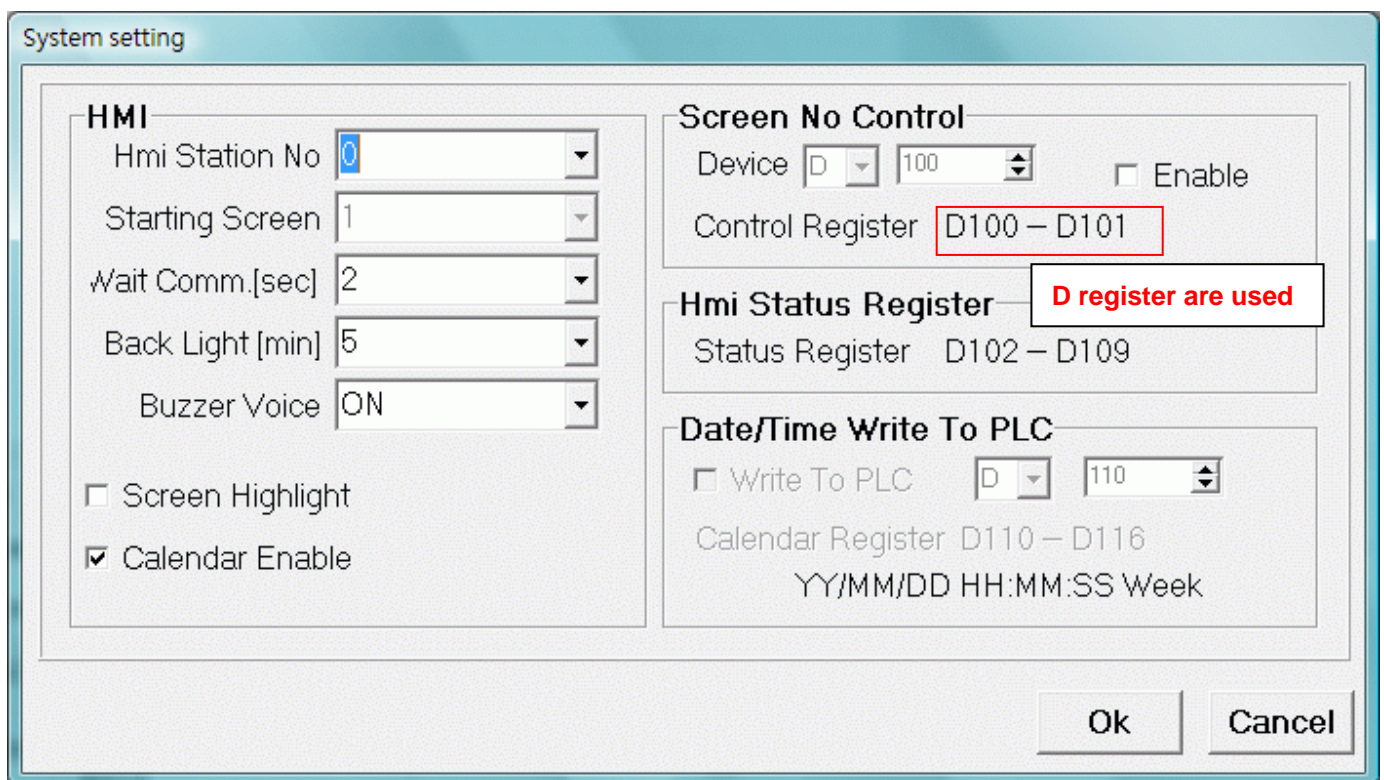
1. New file

Press  or select 「file→New」. Input project name and select HMI/PLC type.



2. System setting

Press  or select 「Option→System Setting」



- ◆ Screen No. Control: Change screen by D register. If **Enable** is selected, user can change screen by D register which is set.
- ◆ Date/Time Write to PLC: it is applicable to EP300 only.

3. Screen property setting

EP314 |
Screen Property

1 Screen No | 1 Starting Screen No | 1 2
Description | 3
Press ↑ Jump To Screen | 0 4
Press ↓ Jump To Screen | 0

- 1) Screen No.: Set this screen number. Screen No. is changed after input number and press ENTER key.
- 2) Starting Screen No.: Set starting screen number
- 3) Description: Describe this screen
- 4) Screen-jump setting. Press Up or Down button, screen will jump from this screen to setting screen number

4. Add components

4-1 Indicator

Press  or select 「Components→Indicator」

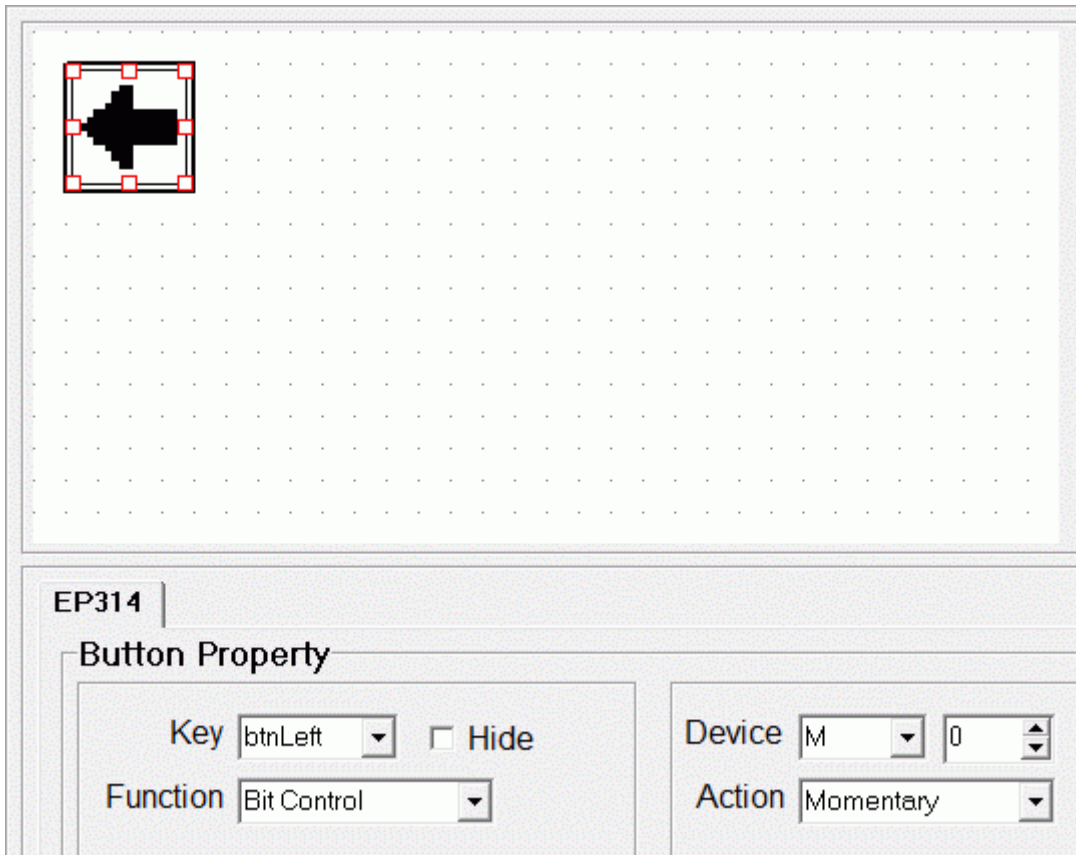
EP314 |
Indicator Property

Device | M | 0 | On Blinking

- ◆ Device: Set monitored device
- ◆ ON Blinking: When device is set ON and this option is selected, indicator will be blinked. If this option is not selected, indicator will be lit.

4-2 Button (Function Key)

Press  or select 「Components→Function Key」



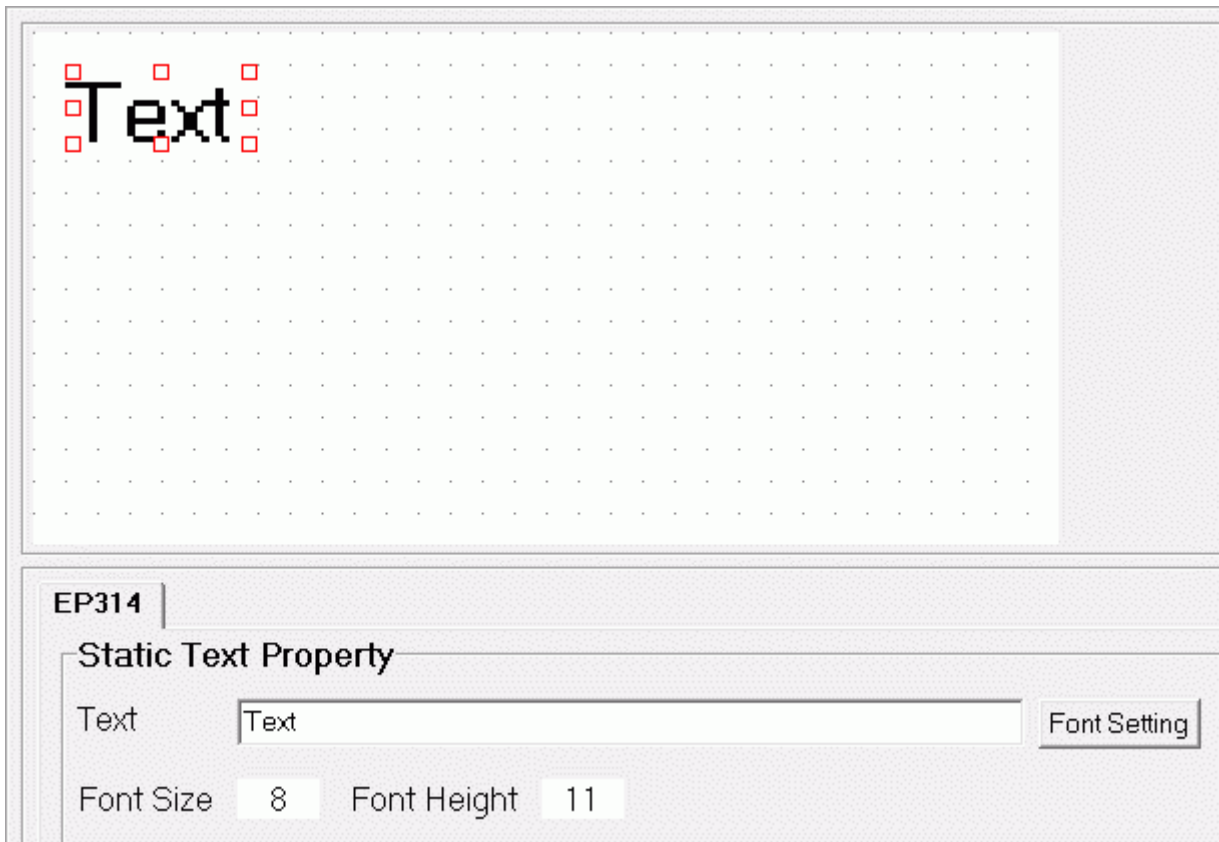
- ◆Key: choose type of Function Key
- ◆Hide: If button is set to hide, button's frame will become to blue in edit screen.
- ◆Function:
 - Bit Control:
 - Action:
 - Momentary: when button of panel is pressed, device is ON; when button is not pressed, device is OFF.
 - Set ON: press button of panel once, device is ON
 - Set OFF: press button of panel once, device is OFF
 - Toggle: when press button of panel once, device is ON, and press it once again, device is OFF.

Change Screen: jump to screen which is set.

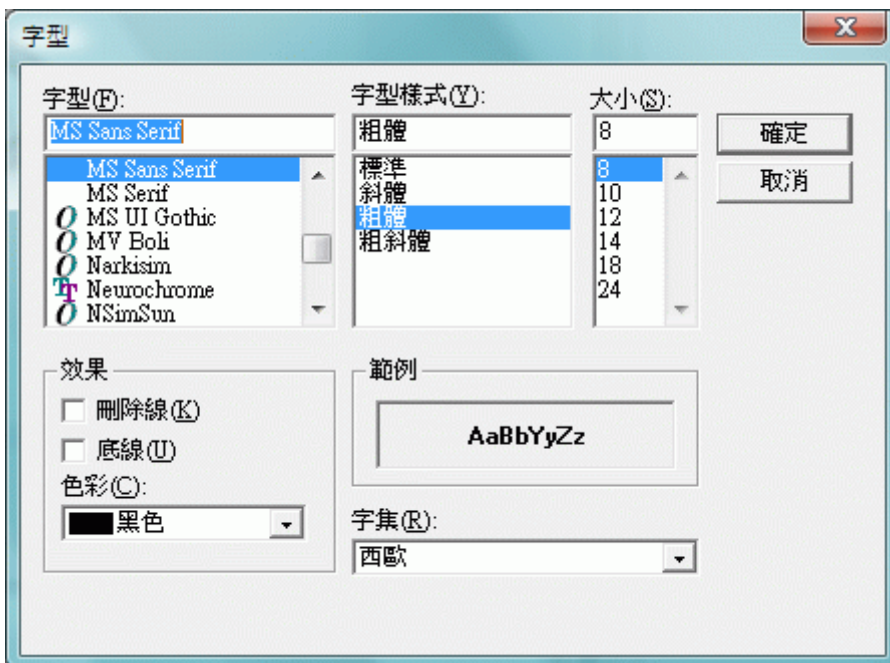
Set Constant: Write value to D register
Value length: select 16 bits or 32 bits
Value type: reserved

4-3 Static text

Press **A** or select 「Components→Static Text」



◆ Font Setting: Font size is able to be set (8 / 10 / 12 / 14 / 18 / 24)



4-4 Dynamic text

Press **D_T** or select 「Components→Dynamic Text」

EP314

Dynamic Text Property

Device **D** **0**


Font Setting

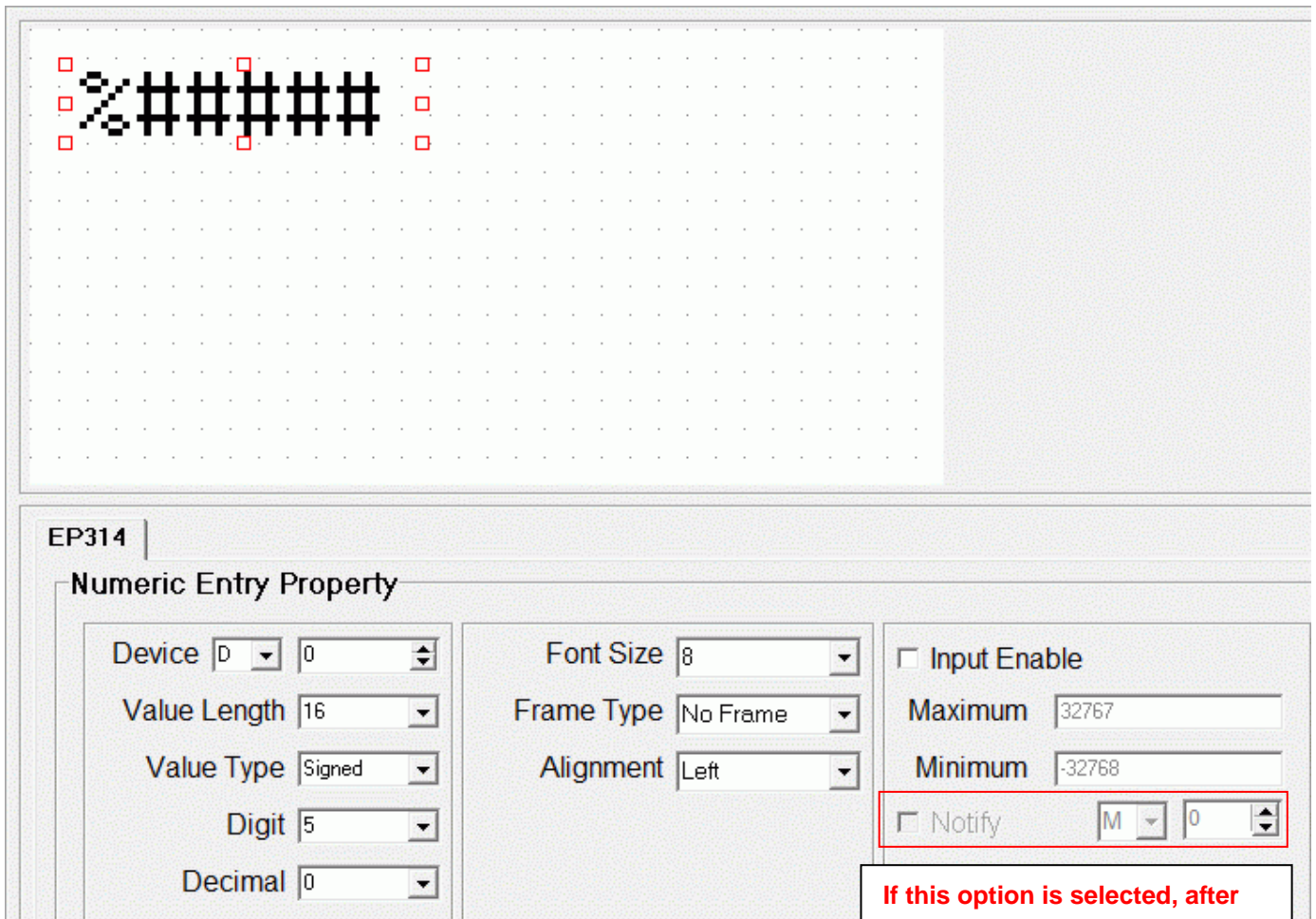
Font Size **8** Height **11**

Value	Text
0	DText
1	
2	
3	
4	
5	
6	
7	

◆ Example: as this illustration, when **D0=0**, it will display **DText**.

4-5 Numeric Entry

Press  or select 「Components→Numeric Entry」



EP314

Numeric Entry Property

Device

Value Length

Value Type

Digit

Decimal

Font Size

Frame Type

Alignment

Input Enable

Maximum

Minimum

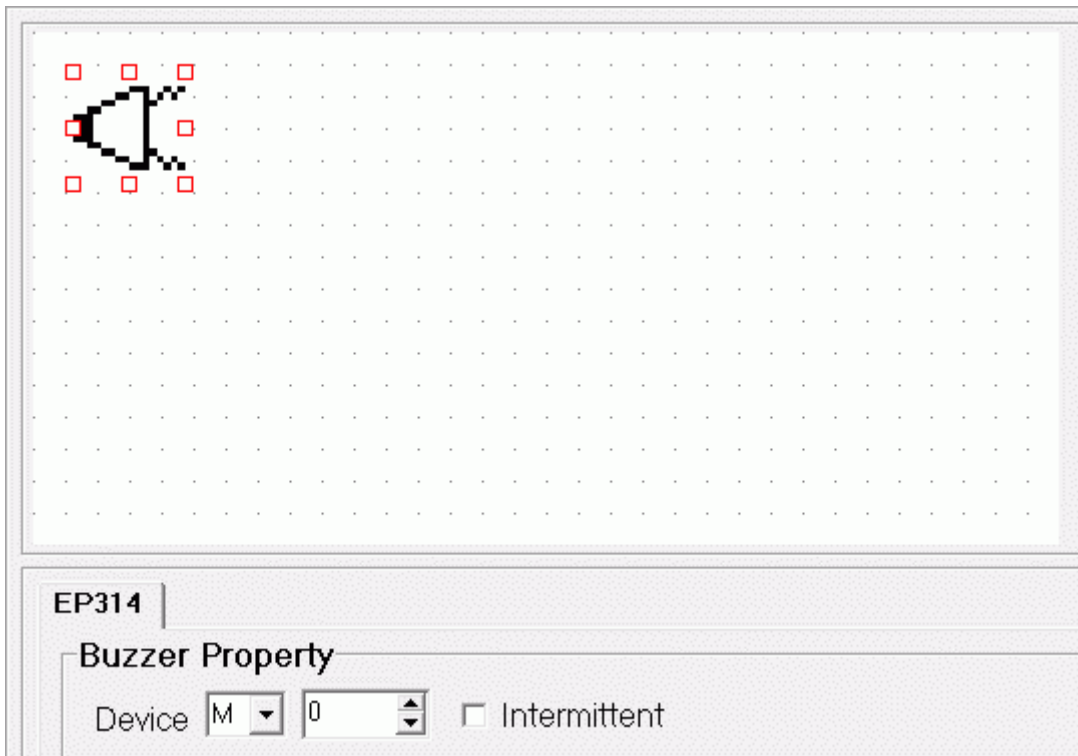
Notify

If this option is selected, after value is input, device will be ON.

- ◆ Value Length: 16 bits or 32 bits
- ◆ Value Type: Signed / Unsigned / HEX (hexadecimal)
- ◆ Font Size: 8 / 10 / 12 are selectable
- ◆ Input Enable: set range of value

4-6 Buzzer


Press  or select 「Components→Buzzer」

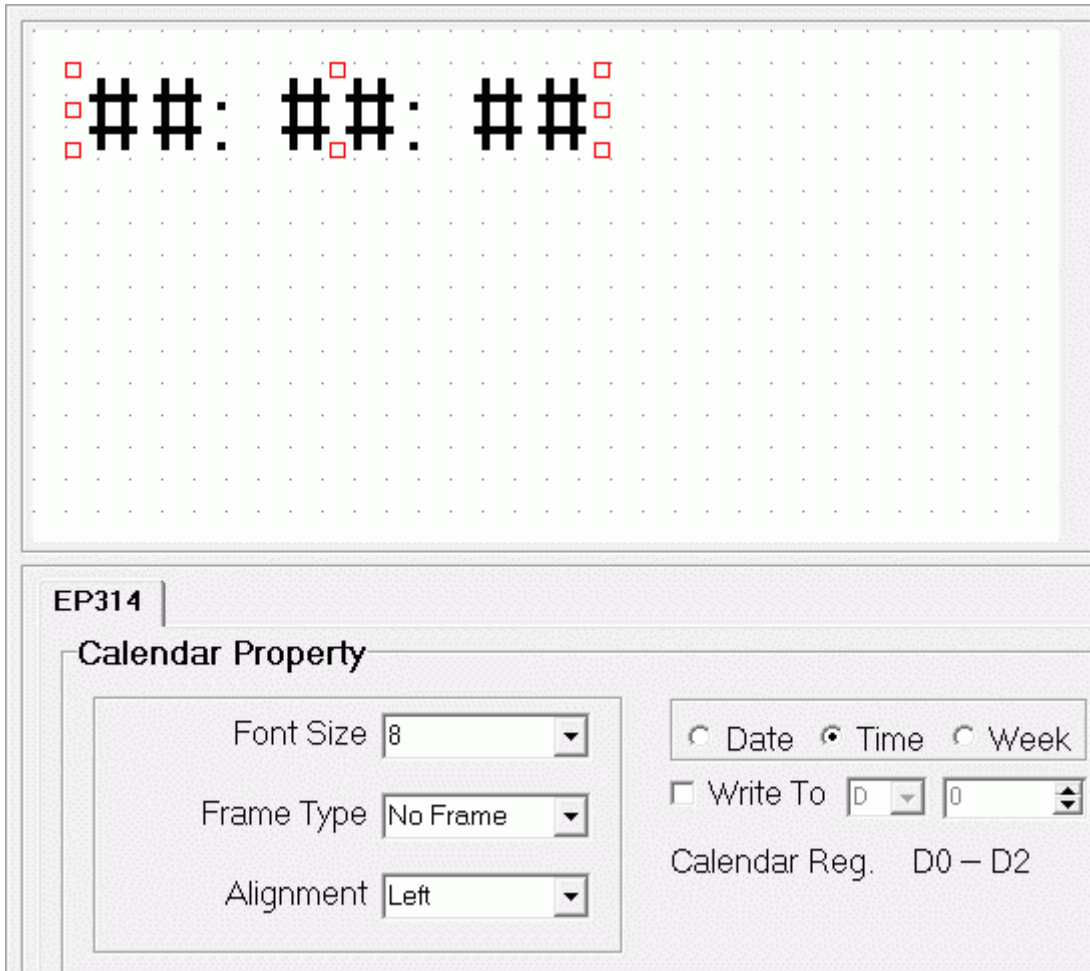


The screenshot shows a software interface for configuring a buzzer component. At the top, there is a grid where a buzzer symbol is placed. Below the grid, the component is identified as 'EP314'. Underneath, the 'Buzzer Property' section contains a 'Device' dropdown menu set to 'M', a numeric spinner set to '0', and an unchecked 'Intermittent' checkbox.

◆ If **Intermittent** is selected, buzzer will be ON about 0.5 sec. and be OFF about 0.5 sec.

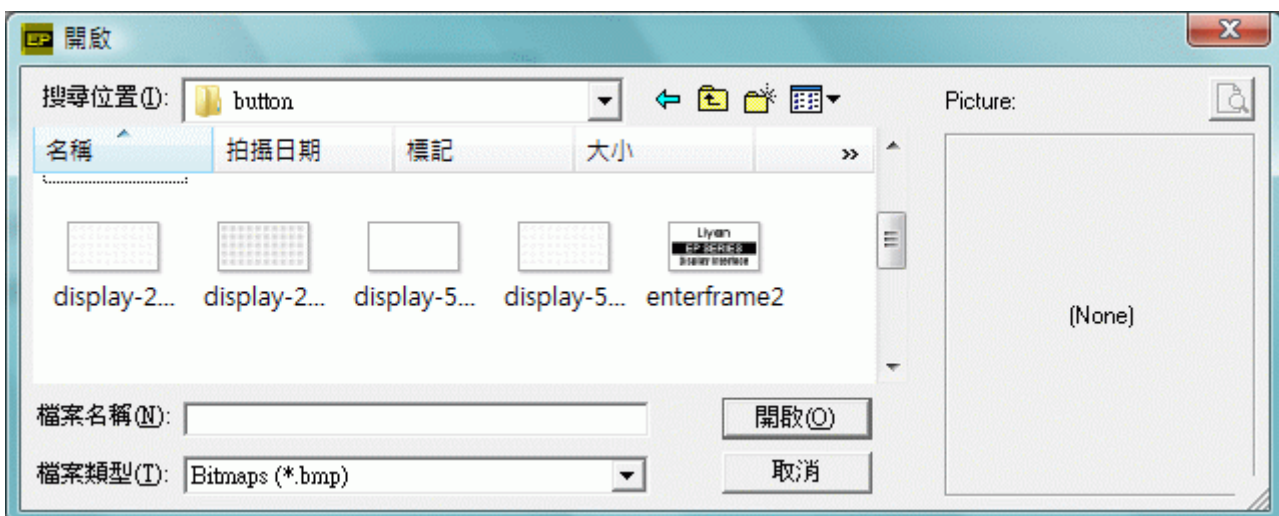
4-7 Calendar

Press  or select 「Components→Calendar display」




4-8 BitMap

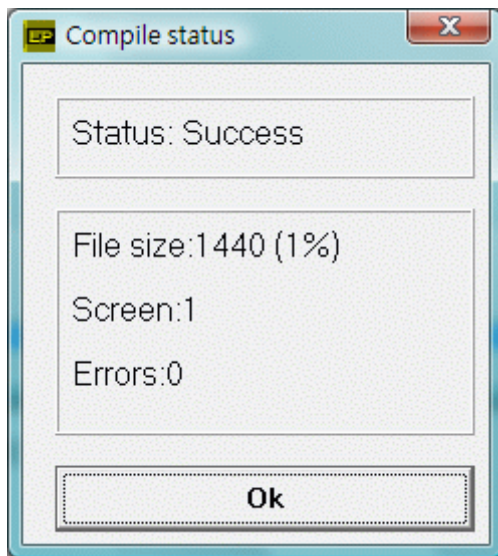
Press  or 「Components→Bitmap」




- ◆ Open BitMap which is input
- ◆ User can input self-designed BitMap file to screen
- ◆ BitMap format: 128 x 64 dots, monochrome

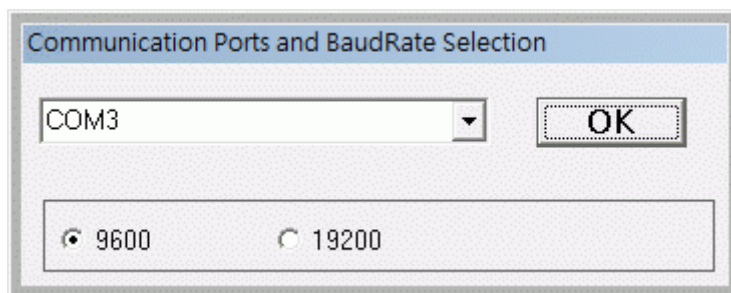
5. Compile

Press  or select 「Tools→Compile」



6. Download

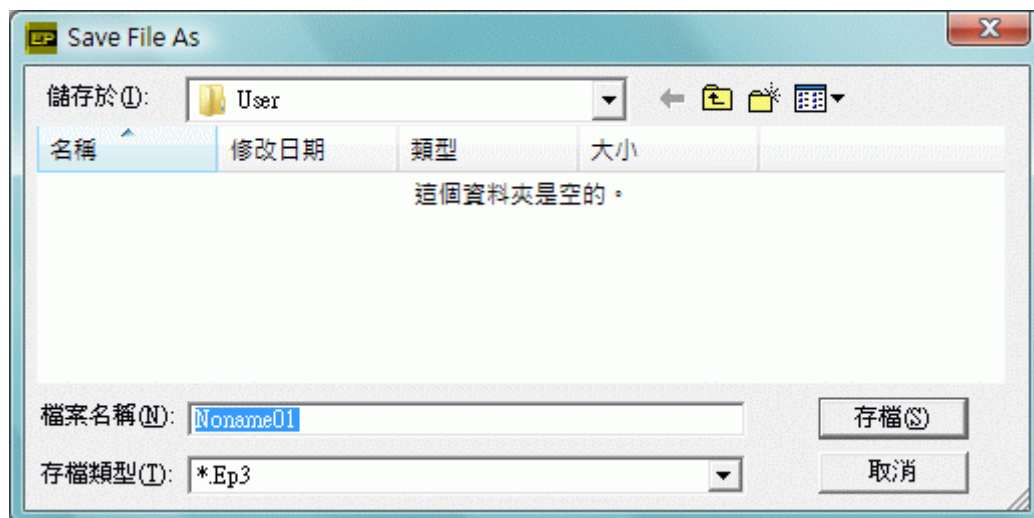
Press  or select 「Tools→Download」



◆ Set communication port and BaudRate

7. Save file

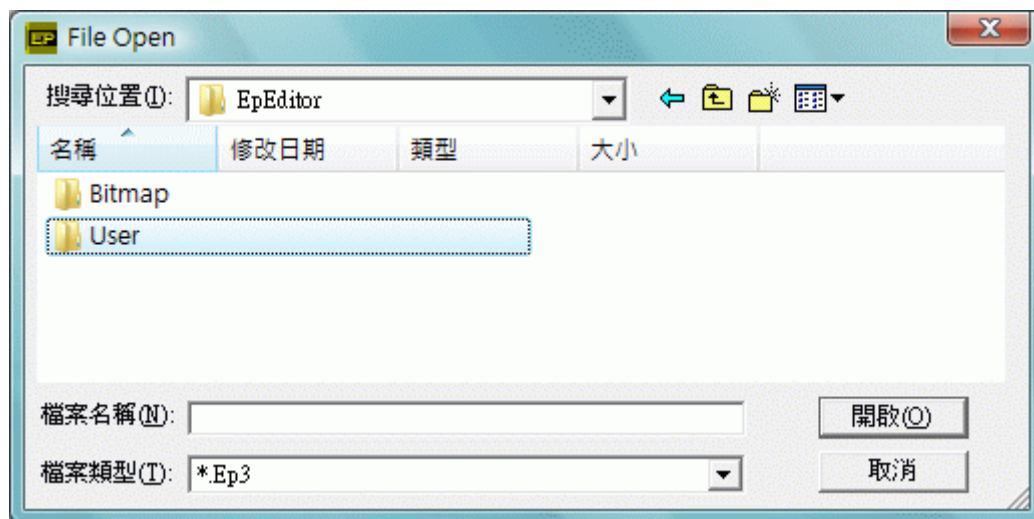
Press  or select 「File→Save」



◆ When user saves file at the first time, system will save it to C:\Liyen\EpEditor\User if user does not assign it.

8. Open file

Press  or select 「File→Open」



◆ File type: choose .Ep3 file

3. Change current value

Device (D) Value 16 32

Command Display

◆ Device[D]: Input device's address of D (D0~D8255)

◆ Value:

16bits : Set K value (Range: K-32768~K32767) or H value (Range: H0000~FFFF)

32bits : Set K value (Range: K-2147483648~K2147483647) or H value (Range: H00000000~FFFFFFFF)

4. Keyword setting

Keyword setting

Old Keyword

New Keyword

◆ Set password: input it in New Keyword

◆ Change password: input Old Keyword first, and then input New Keyword

5. Remote RUN/STOP

◆ Remote PLC RUN or STOP

6. Set time

Set time

Clock setup

YY	MM	DD	Hour	Min.	Sec.	Day
<input type="text" value="08"/>	<input type="text" value="2"/>	<input type="text" value="21"/>	<input type="text" value="13"/>	<input type="text" value="55"/>	<input type="text" value="35"/>	<input type="text" value="Thursday"/>

◆ Set time: Year, Month, Date, Hour, Minute, Second, Day(week)

◆ Start monitor: Start to monitor time

Stop monitor: Stop to monitor time

Setup: Write setting time. (When Setup, user has to stop monitor first)

7. One Day Control

One Day Timer Control

Set number of control

One day control Number Start Dregister Start Mregister

	Control On (HH:MM:SS)	Control Off (HH:MM:SS)	Notify
No.01	<input type="text" value="D0 : D1 : D2"/>	<input type="text" value="D3 : D4 : D5"/>	<input type="text" value="M0"/>
No.02	<input type="text" value="D6 : D7 : D8"/>	<input type="text" value="D9 : D10 : D11"/>	<input type="text" value="M1"/>
No.03	<input type="text" value="Dxx : Dxx : Dxx"/>	<input type="text" value="Dxx : Dxx : Dxx"/>	<input type="text" value="Mxx"/>
No.04	<input type="text" value="Dxx : Dxx : Dxx"/>	<input type="text" value="Dxx : Dxx : Dxx"/>	<input type="text" value="Mxx"/>
No.05	<input type="text" value="Dxx : Dxx : Dxx"/>	<input type="text" value="Dxx : Dxx : Dxx"/>	<input type="text" value="Mxx"/>
No.06	<input type="text" value="Dxx : Dxx : Dxx"/>	<input type="text" value="Dxx : Dxx : Dxx"/>	<input type="text" value="Mxx"/>
No.07	<input type="text" value="Dxx : Dxx : Dxx"/>	<input type="text" value="Dxx : Dxx : Dxx"/>	<input type="text" value="Mxx"/>
No.08	<input type="text" value="Dxx : Dxx : Dxx"/>	<input type="text" value="Dxx : Dxx : Dxx"/>	<input type="text" value="Mxx"/>
.....			

D0 -- D11 Be Used M0 -- M1 Be Used

◆ Example: as this illustration, when time of Control On is up, M0 is ON; when time of Control Off is up, M0 is off.

LIYAN PROGRAMMABLE LOGIC CONTROLLER

EPeditor-edoc0906v143b

LIYAN ELECTRIC INDUSTRIAL LTD.

TEL : 886 - 4 - 25613700

FAX : 886 - 4 - 25613408

Website : <http://www.liyanplc.com>

E - mail : twliyan@ms16.hinet.net